



# HL260M PARTS BREAKDOWN

## Build Code

ACW-05

BB31-05

MA1201

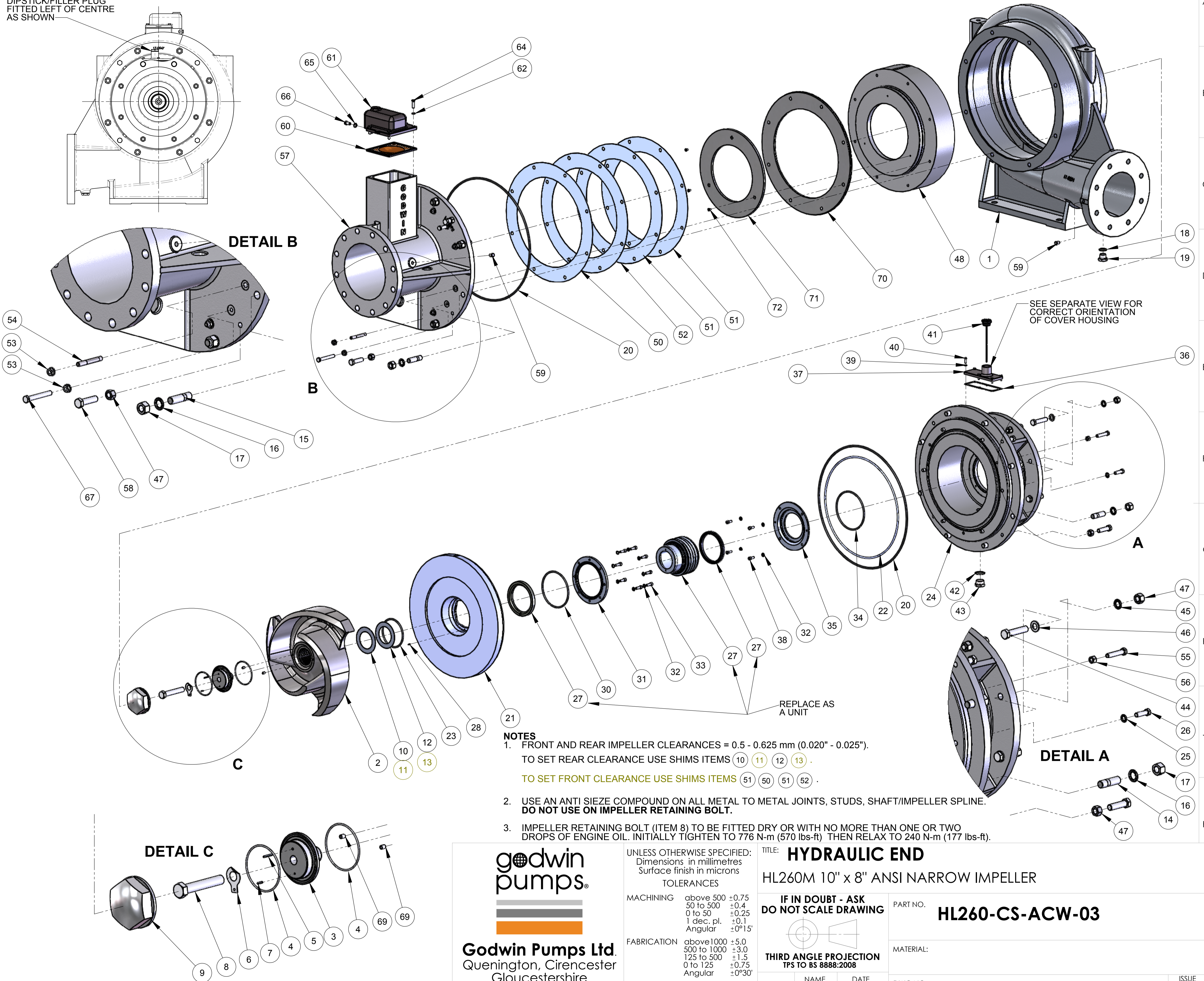
EP41-18

**\*PLEASE USE THE PARTS LISTS THAT FOLLOW EACH PICTURE TO OBTAIN PART NUMBERS\***

*Copyright 2009 by Godwin Pumps of America, Inc., all rights reserved. No part of this document may be reproduced or distributed in any form or by any means without the prior written permission of Godwin Pumps of America, Inc.*

Pos	Item	Description	Qty	2500hrs	5000hrs
1	11-0591-3015	VOLUTE	1		
2	12-0825-3025	IMPELLER	1		X
3	36-0750-8121	IMPELLER WASHER	1		X
4	38-1358-4112	O RING	2	X	
5	41-0621-9912	ROLL PIN	1		X
6	36-0751-9915	TAB WASHER	1		X
7	41-0529-9912	ROLL PIN	1	X	
8	35-0699-8922/120	BOLT HEX HEAD	1	X	
9	36-0752-8111	IMPELLER WASHER COVER	1		X
10	36-0772-6513	SHIM IMPELLER	1		X
11	36-0772-6523	SHIM IMPELLER	1		X
12	36-0772-6533	SHIM IMPELLER	1		X
13	36-0772-6543	SHIM IMPELLER	1		X
14	35-0670-8132	STUD	8		
15	35-0675-8132	STUD	8		
16	35-0601-8762	SPRING WASHER	16		
17	35-0601-8182	NUT HEX FULL	16		
18	43-0686-9912	SEAL BONDED RUBBER	1	X	
19	43-2029-9912	PLUG	1		
20	38-1591-4112	O RING	2	X	
21	12-0826-0915	WEARPLATE REAR	1		
22	38-1574-4112	O RING	1	X	
23	38-1724-4112	O RING	1	X	
24	17-0547-0115	ADAPTOR	1		
25	35-0401-8762	SPRING WASHER	6		
26	35-0440-8412	SCREW HEX HEAD	6		
27	38-1758-9912	SEAL MECHANICAL - ASSEMBLY	1		X
28	41-0719-9912	ROLL PIN	1		X
30	38-1723-4112	O RING	1	X	
31	14-0594-6531	SEAL CLAMP PLATE	1		
32	35-0201-6162	SPRING WASHER	12		
33	35-0225-3642	SCREW CAP HEAD SOCKET	8		
34	38-1636-4112	O RING	1	X	
35	14-0592-6525	CARRIER	1		
36	38-1722-1313	GASKET	1		
37	14-0593-0115	COVER HOUSING	1		
38	35-0220-3642	SCREW CAP HEAD SOCKET	4		
39	35-0101-8762	SPRING WASHER	6		
40	35-0120-8412	SCREW HEX HEAD	6		
41	54-1567-9915	FILLER/DIPSTICK PLUG	1		
42	43-0764-9912	SEAL BONDED RUBBER	1		X
43	43-1911-9912	PLUG	1		
44	35-0575-8402	BOLT HEX HEAD	8		
45	35-0501-8762	SPRING WASHER	8		
46	35-0501-8172	PLAIN WASHER	8		
47	35-0501-8182	NUT HEX FULL	16		
48	12-0827-0925	WEARPLATE FRONT	1		X
49	36-0775-6513	SHIM WEARPLATE	1		X
50	36-0775-6523	SHIM WEARPLATE	1		X
51	36-0775-6533	SHIM WEARPLATE	2		X
52	36-0775-6543	SHIM WEARPLATE	1		X
53	35-0404-8984	NUT HEX SEAL LOCK	12		X
54	35-0490-8132	STUD	8		
55	35-0460-8412	SCREW HEX HEAD	3		
56	35-0401-8182	NUT HEX FULL	3		
57	11-0592-3015	FRONT COVER	1		
58	35-0560-8412	SCREW HEX HEAD	8		
59	43-1506-6112	PLUG	2		
60	23-0630-9913	FILTER	1		X
61	21-0239-0115	SEPARATION TANK	1		
62	35-0201-8762	SPRING WASHER	4		
64	35-0230-8412	SCREW HEX HEAD	4		
65	35-0301-8762	SPRING WASHER	1		
66	35-0320-8412	SCREW HEX HEAD	1		
67	35-0490-8412	SCREW HEX HEAD	4		
69	35-0212-8452	SCREW GRUB SOCKET CUP POINT	2		X
70	18-0597-8515	PLATE SPACER	1		
71	18-0598-8515	PLATE SPACER	1		
72	35-0112-8422	SCREW C-SUNK SLOTTED	3		

IMPORTANT!  
DIPSTICK/FILLER PLUG  
FITTED LEFT OF CENTRE  
AS SHOWN



**NOTES**

- FRONT AND REAR IMPELLER CLEARANCES = 0.5 - 0.625 mm (0.020" - 0.025").  
TO SET REAR CLEARANCE USE SHIMS ITEMS 10 11 12 13 .  
TO SET FRONT CLEARANCE USE SHIMS ITEMS 51 50 51 52 .
- USE AN ANTI SIEZE COMPOUND ON ALL METAL TO METAL JOINTS, STUDS, SHAFT/IMPELLER SPLINE.  
**DO NOT USE ON IMPELLER RETAINING BOLT.**
- IMPELLER RETAINING BOLT (ITEM 8) TO BE FITTED DRY OR WITH NO MORE THAN ONE OR TWO DROPS OF ENGINE OIL. INITIALLY TIGHTEN TO 776 N-m (570 lbs-ft) THEN RELAX TO 240 N-m (177 lbs-ft).



**Godwin Pumps Ltd.**  
Quenington, Cirencester  
Gloucestershire  
GL7 5BX, UK.

Tel: +44 (0)1285 750271  
Fax: +44 (0)1285 750352

© 2010

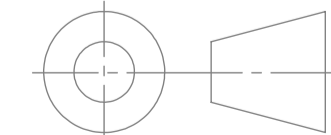
UNLESS OTHERWISE SPECIFIED:  
Dimensions in millimetres  
Surface finish in microns  
TOLERANCES

MACHINING	above 500 ±0.75 50 to 500 ±0.4 0 to 50 ±0.25 1 dec. pl. ±0.1 Angular ±0°15'
FABRICATION	above 1000 ±5.0 500 to 1000 ±3.0 125 to 500 ±1.5 0 to 125 ±0.75 Angular ±0°30'
FLATNESS	above 1000 ±3.0 250 to 1000 ±2.0 0 to 250 ±1.0
GA'S & ASSEMBLIES	above 1000 ±5 up to 1000 ±3

**TITLE: HYDRAULIC END**

HL260M 10" x 8" ANSI NARROW IMPELLER

**IF IN DOUBT - ASK  
DO NOT SCALE DRAWING**



**THIRD ANGLE PROJECTION  
TPS TO BS 8888:2008**

DRAWN	AJ	DATE	29/04/2010
APP'VD			
RELEASED	JCK	DATE	21/09/2010

PART NO. **HL260-CS-ACW-03**

DWG NO. **HL260-CS-ACW-03**

MATERIAL:		ISSUE	<b>4</b>
WEIGHT:	kgs	SCALE:	1:10
		SHEET	1 of 1
		<b>A1</b>	

4	ITEM 68 REMOVED	JCK	21/09/2010
ISSUE	DESCRIPTION	ALT NO.	BY DATE

## DESCRIPTION: HYDRAULIC END

PARTS LIST FOR: HL260M-CS-ACW-03

UPDATED 05-24-2010

REF	PART NUMBER	DESCRIPTION	QTY
1	11.0591.3015	PUMP BODY	1
2	12.0825.3025	IMPELLER	1
3	36.0750.8121	IMPELLER WASHER	1
4	38.1358.4112A	O-RING	2
5	41.0621.9912A	ROLL PIN	1
6	36.0751.9915	TAB WASHER	1
7	41.0529.9912A	ROLL PIN	1
8	35.0699.8922/120	HEX HEAD BOLT	1
9	36.0752.8111	IMPELLER WASHER COVER	1
10	36.0772.6513	IMPELLER SHIM	1
11	36.0772.6523	IMPELLER SHIM	1
12	36.0772.6533	IMPELLER SHIM	1
13	36.0772.6543	IMPELLER SHIM	1
14	35.0670.8132A	STUD	8
15	35.0675.8132A	STUD	8
16	35.0601.8762	SPRING WASHER	16
17	35.0601.8182A	FULL HEX NUT	16
18	43.0686.9912	DOWTY WASHER	1
19	43.2029.9912	PLUG	1
20	38.1591.4112A	O-RING	2
21	12.0826.0915	REAR WEARPLATE	1
22	38.1574.4112A	O-RING	1
23	38.1724.4112A or 38.1080.4112A	O-RING	1
24	17.0547.0115	ADAPTOR	1
25	35.0401.8762	SPRING WASHER	6
26	35.0440.8412	HEX HEAD SCREW	6
27	38.1758.9912	MECHANICAL SEAL	1
30	38.1723.4112A	O-RING	1
31	14.0594.8521	SEAL CLAMP PLATE	1
32	35.0201.6162A	SPRING WASHER	8
33	35.0225.3642	SOCKET HEAD SCREW	4
34	38.1636.4112A	O-RING	1
35	14.0592.6525	CARRIER	1
36	38.1722.1313	GASKET	1
37	14.0593.0115	COVER HOUSING	1
38	35.0220.3642	SOCKET HEAD SCREW	4
39	35.0101.8762	SPRING WASHER	6
40	35.0120.8412	HEX HEAD SCREW	6
41	54.1398.9955	DIPSTICK	1
42	43.0764.9912	DOWTY WASHER	1

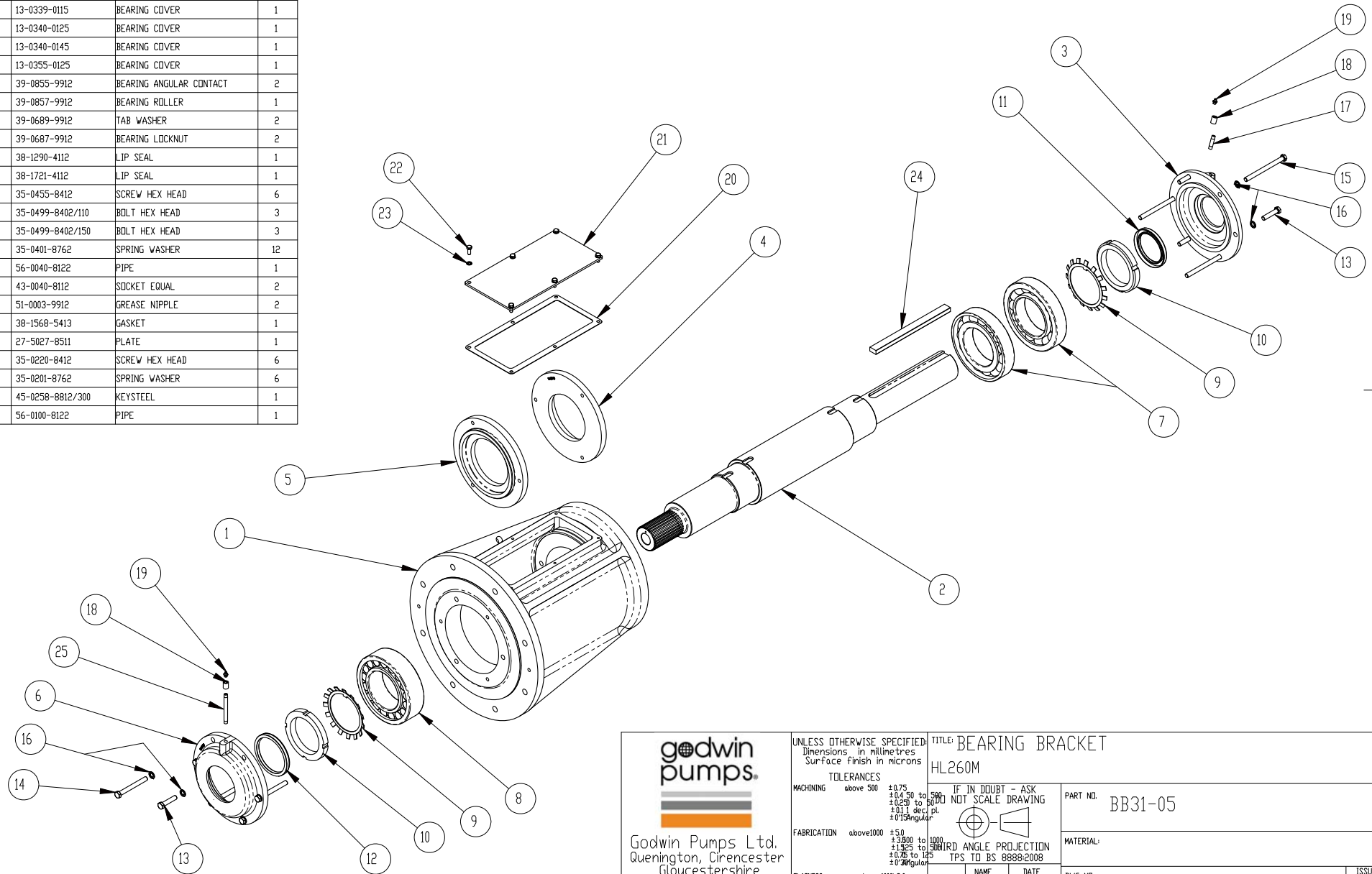
## DESCRIPTION: HYDRAULIC END


PARTS LIST FOR: HL260M-CS-ACW-03

UPDATED 05-24-2010

REF	PART NUMBER	DESCRIPTION	QTY
43	43.1911.9912	PLUG	1
44	35.0575.8402	HEX HEAD BOLT	8
45	35.0501.8762	SPRING WASHER	8
46	35.0501.8172	PLAIN WASHER	8
47	35.0501.8182	NUT	16
48	12.0827.0915	FRONT WEARPLATE	1
49	36.0775.6513	WEARPLATE SHIM	1
50	36.0775.6523	WEARPLATE SHIM	1
51	36.0775.6533	WEARPLATE SHIM	1
52	36.0775.6543	WEARPLATE SHIM	1
53	35.0404.8984	SEAL LOCKNUT	12
54	35.0490.8132	STUD	8
55	35.0460.8412	HEX HEAD SCREW	3
56	35.0401.8182A	NUT	3
57	11.0592.3015	FRONT COVER	1
58	35.0560.8412	HEX HEAD SCREW	8
59	43.1506.6112	PLUG	2
60	23.0630.9913	FILTER	1
61	21.0239.0115	SEPARATION TANK	1
62	35.0201.8762	SPRING WASHER	4
64	35.0230.8412	HEX HEAD SCREW	4
65	35.0301.8762	SPRING WASHER	1
66	35.0320.8412	HEX HEAD SCREW	1
67	35.0490.8412	HEX HEAD SCREW	4
68	43.0103.0812	PLUG	1
69	35.0212.8452	GRUB SCREW	2
70	18.0597.8515	SPACER PLATE	1
71	18.0598.8515	SPACER PLATE	1
72	35.0112.8422	SLOTTED SCREW	3

Pos	Item	Description	Qty
20	16-0946-8011		1
1	13-0341-0115	BEARING BRACKET	1
2	16-0946-8011	SHAFT	1
3	13-0339-0115	BEARING COVER	1
4	13-0340-0125	BEARING COVER	1
5	13-0340-0145	BEARING COVER	1
6	13-0355-0125	BEARING COVER	1
7	39-0855-9912	BEARING ANGULAR CONTACT	2
8	39-0857-9912	BEARING ROLLER	1
9	39-0689-9912	TAB WASHER	2
10	39-0687-9912	BEARING LOCKNUT	2
11	38-1290-4112	LIP SEAL	1
12	38-1721-4112	LIP SEAL	1
13	35-0455-8412	SCREW HEX HEAD	6
14	35-0499-8402/110	BOLT HEX HEAD	3
15	35-0499-8402/150	BOLT HEX HEAD	3
16	35-0401-8762	SPRING WASHER	12
17	56-0040-8122	PIPE	1
18	43-0040-8112	SOCKET EQUAL	2
19	51-0003-9912	GREASE NIPPLE	2
20	38-1568-5413	GASKET	1
21	27-5027-8511	PLATE	1
22	35-0220-8412	SCREW HEX HEAD	6
23	35-0201-8762	SPRING WASHER	6
24	45-0258-8812/300	KEYSTEEL	1
25	56-0100-8122	PIPE	1



 <p>Godwin Pumps Ltd. Quenington, Cirencester Gloucestershire GL7 5BX, UK. Tel: +44 (0)1285 750271 Fax: +44 (0)1285 750352 © 2009</p>	UNLESS OTHERWISE SPECIFIED: Dimensions in millimetres Surface finish in microns	TITLE: BEARING BRACKET HL260M		
	TOLERANCES MACHINING above 500 $\pm 0.75$ $\pm 0.4$ to 500 $\pm 0.25$ to 50 $\pm 0.1$ dec.pl. $\pm 0.15$ angular	IF IN DOUBT - ASK DO NOT SCALE DRAWING		PART NO. BB31-05
	FABRICATION above 1000 $\pm 5.0$ $\pm 3.00$ to 1000 $\pm 1.25$ to 500 $\pm 0.75$ to 125 $\pm 0.20$ angular	THIRD ANGLE PROJECTION TPS TO BS 8888:2008		MATERIAL:
	FLATNESS above 1000 $\pm 3.0$ $\pm 2.00$ to 1000 $\pm 1.0$ to 250	NAME AJ	DATE 01/07/2009	DWG NO. BB31-05
GA's & ASSEMBLIES $\pm 5.0$ above 1000 $\pm 3.0$ to 1000 $\pm 1.0$ to 250	APP'D RELEASED AJ	25/02/2010	WEIGHT: kgs SCALE: 1:50 SHEET 1 of 1	
2 Updated shaft and NDE bearing cover shown	ALT NO.	AJ BY	10/09/2009 DATE	ISSUE 2

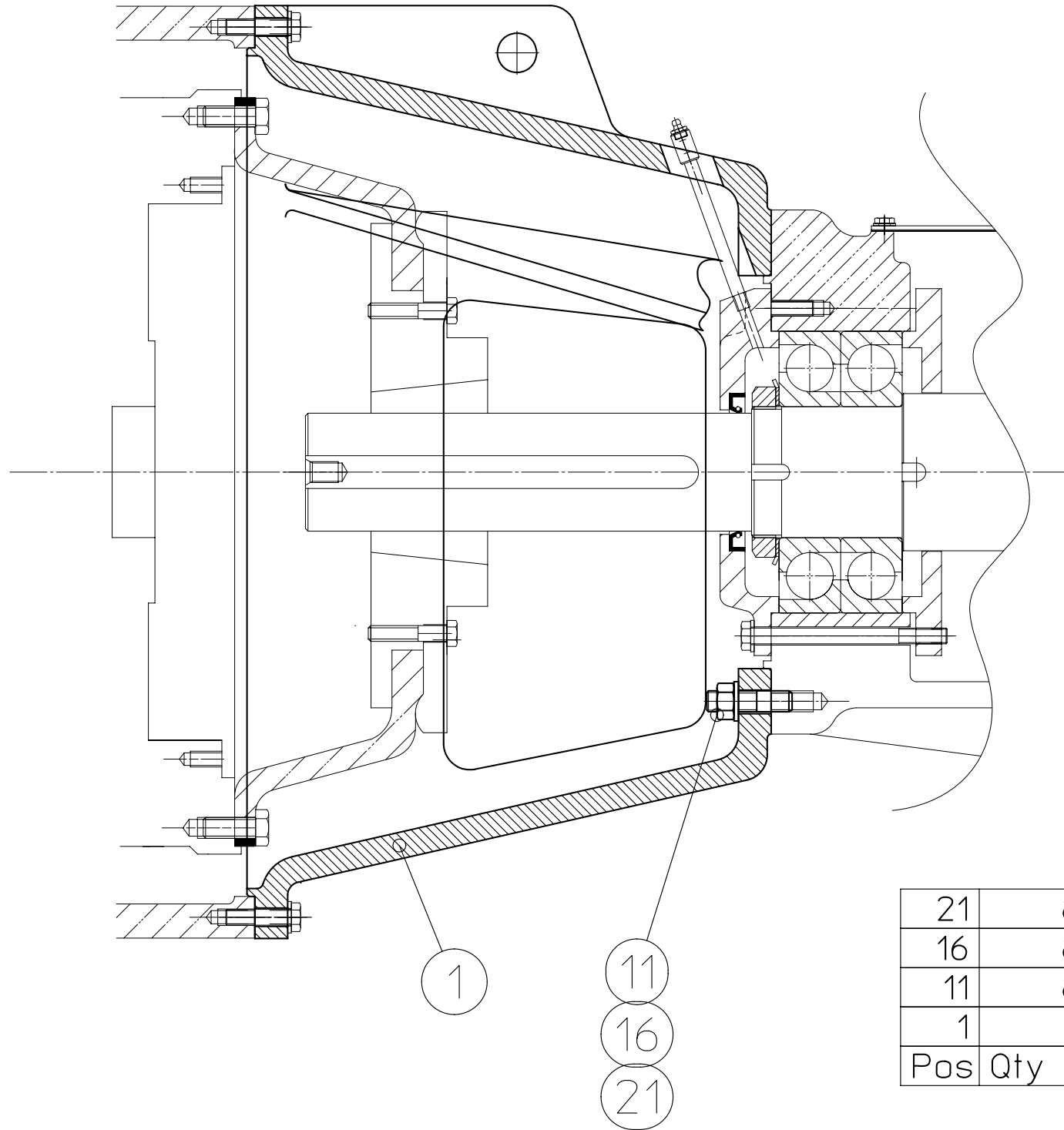
ISSUE	DESCRIPTION	ALT NO.	BY	DATE
2	Updated shaft and NDE bearing cover shown		AJ	10/09/2009

## DESCRIPTION: BEARING BRACKET

PARTS LIST FOR: BB31-05

UPDATED 05-24-2010

REF	PART NUMBER	DESCRIPTION	QTY
1	13.0341.0115	BEARING BRACKET	1
2	16.0946.8011	SHAFT KEY	1
3	13.0339.0115	BEARING COVER	1
4	13.0340.0125	BEARING COVER	1
5	13.0340.0145	BEARING COVER	1
6	13.0355.0125	BEARING COVER	1
7	39.0855.9912A	ANGULAR CONTACT BEARING	2
8	39.0857.9912A	ROLLER BEARING	1
9	39.0689.9912A	TAB WASHER	2
10	39.0687.9912A	BEARING LOCKNUT	2
11	38.1290.4112A	LIP SEAL	1
12	38.1721.4112A	LIP SEAL	1
13	35.0455.8412	HEX HEAD SCREW	6
14	35.0499.8402/110	HEX HEAD BOLT	3
15	35.0499.8402/150	HEX HEAD BOLT	3
16	35.0401.8762	SPRING WASHER	12
17	56.0040.8122	PIPE	1
18	43.0040.8112	EQUAL SOCKET	2
19	51.0003.9912	GREASE NIPPLE	2
20	38.1568.5413	GASKET	1
21	27.5027.8511	PLATE	1
22	35.0220.8412	HEX HEAD SCREW	6
23	35.0201.8762	SPRING WASHER	6
24	45.0258.8812/300	KEYSTEEL	1
25	56.0100.8122	PIPE	1



21	8	35-0501-8762	WASHER SPRING
16	8	35-0501-8182	NUT HEX FULL
11	8	35-0565-8132	STUD
1	1	17-0497-0115	ADAPTOR ENGINE
Pos	Qty	PartNo	Description

1	29/08/08	COMPILED			DRG. No.	MA1201	Sht 1 of 1
Iss. Date		Detail			TITLE	MOTOR ADAPTOR	
		Godwin Pumps Limited Quenington, Cirencester, Gloucestershire GL7 5BX, England. Tel: ++ 44 (0)1285 750271 www.godwinpumps.co.uk	TOLERANCES ± 3mm (unless otherwise stated)  We cannot guarantee dimensions of outside suppliers equipment  © 2007	IF IN DOUBT - ASK DO NOT SCALE Graphics: BS8888:2002 Dimensions: mm  Third Angle Projection 	Drawn A.J. Date 14/02/01  Ch'k'd A.J. Date 20/06/01  Scale 1:5	HL250M PUMP. SAE0 FLYWHEEL HOUSING	<div style="border: 1px solid black; padding: 2px; display: inline-block;">A3</div>

DESCRIPTION: MOTOR ADAPTOR

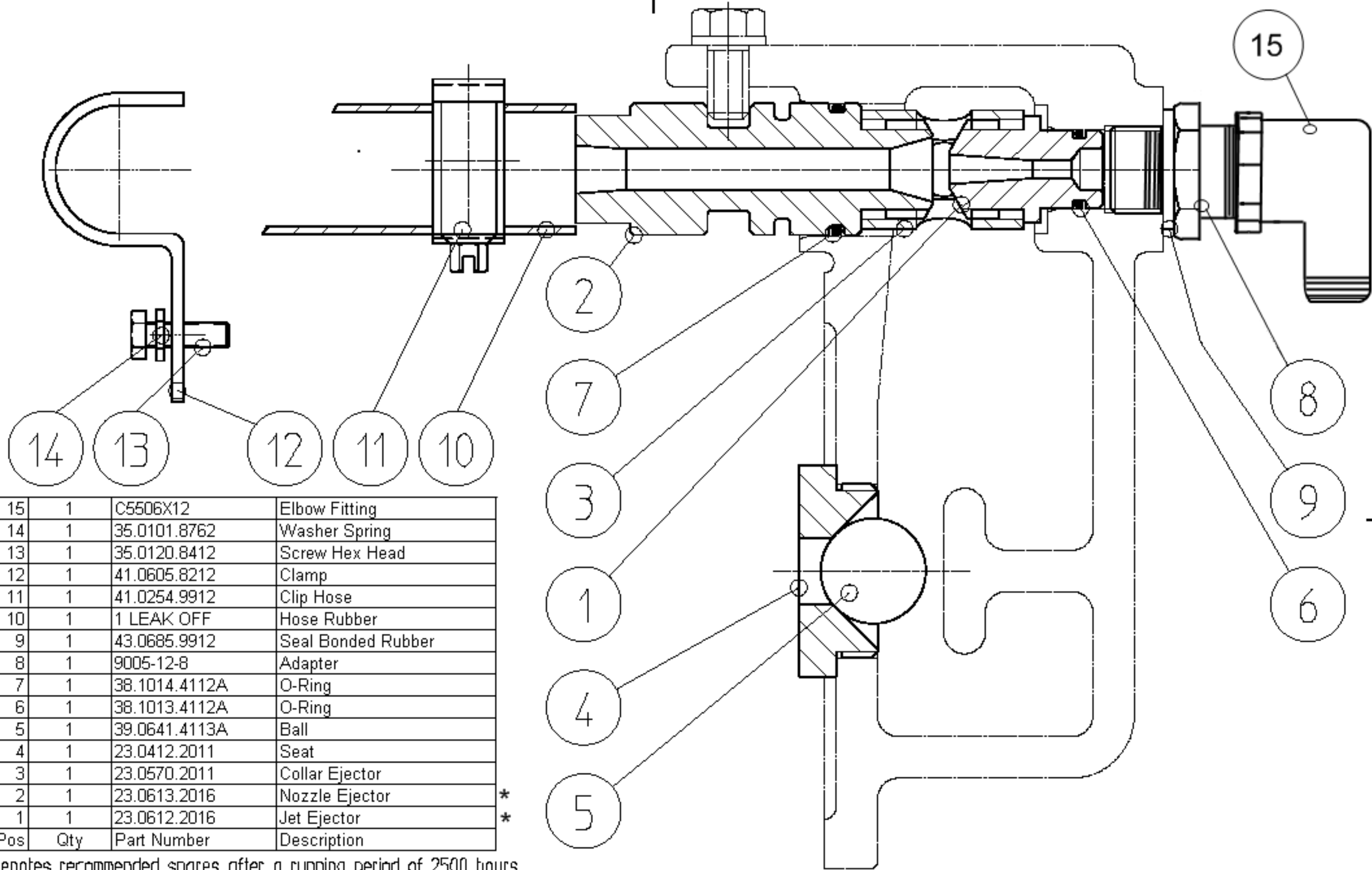
ISSUE 1

PARTS LIST FOR: MA1201

DATE: 06/20/2001

REF	PART NUMBER	DESCRIPTION	QTY
1	17.0497.0115	ENGINE ADAPTOR	1
11	35.0565.8132	STUD	8
16	35.0501.8182	FULL HEX NUT	8
21	35.0501.8762	SPRING WASHER	8





15	1	C5506X12	Elbow Fitting
14	1	35.0101.8762	Washer Spring
13	1	35.0120.8412	Screw Hex Head
12	1	41.0605.8212	Clamp
11	1	41.0254.9912	Clip Hose
10	1	1 LEAK OFF	Hose Rubber
9	1	43.0685.9912	Seal Bonded Rubber
8	1	9005-12-8	Adapter
7	1	38.1014.4112A	O-Ring
6	1	38.1013.4112A	O-Ring
5	1	39.0641.4113A	Ball
4	1	23.0412.2011	Seat
3	1	23.0570.2011	Collar Ejector
2	1	23.0613.2016	Nozzle Ejector
1	1	23.0612.2016	Jet Ejector
Pos	Qty	Part Number	Description

\* denotes recommended spares after a running period of 2500 hours.

1	13/05/04	Compiled	DRG No.	EP41-18	Sht 1
Iss.	Date	Detail	TITLE		of 1
		Godwin Pumps Limited Querington, Cirencester, Gloucestershire GL7 5BX, England Tel: ++ 44 (0)1285 750271 www.godwinpumps.co.uk	EJECTOR PACKAGE 41CFM.CD TYPE.BRASS NICKEL PLATED 3/4 JIC CONNECTION		A3
TOLERANCES ± 3mm (unless otherwise stated)		IF IN DOUBT - ASK DO NOT SCALE Graphics: B53338&2002 Dimensions: mm		Scale 1:1	
We cannot guarantee dimensions of outside suppliers equipment		Third Angle Projection			
© 2007		Drawn M.K.	Date 13/05/04		
		Ch'k'd M.K.	Date 13/05/04		

DESCRIPTION: EJECTOR PACKAGE

PARTS LIST FOR: EP41-18

UPDATED 06-17-2010

REF	PART NUMBER	DESCRIPTION	QTY
1	23.0612.2016	EJECTOR JET	1
2	23.0613.2016	EJECTOR NOZZLE	1
3	23.0570.2011	EJECTOR COLLAR	1
4	23.0412.2011	EJECTOR SEAT	1
5	39.0641.4113A	EJECTOR BALL	1
6	38.1013.4112A	EJECTOR JET O-RING	1
7	38.1014.4112A	EJECTOR NOZZLE O-RING	1
8	9005-12-8	STUD ADAPTOR	1
9	43.0685.9912	RUBBER SEALING WASHER	1
10	1" LEAK OFF	LEAK OFF HOSE (Not Pictured)	3 ft.
11	41.0254.9912	HOSE CLIP	1
12	41.0605.8212	CLAMP	1
13	35.0120.8412	HEX HEAD SCREW	1
14	33.0101.8762	WASHER SPRING	1
15	C5506X12	ELBOW FITTING	1

\*\* H24312652612112 COMPRESSOR LINE 1